



jacobs  
industries

# COMPANY PROFILE



# CONTENTS

Page 1	Company Background
Page 2	Service Offering
Page 3	BBEEE, Compliance and Social Responsibility
Page 4	Quality Control
Page 5	Showcase
Page 6	Contact Details





## COMPANY BACKGROUND

**Jacobs Industries (Pty) Ltd is a subsidiary company to Jacobs Joinery and Shopfitters (Pty) Ltd.**

The company was established by the directors of Jacobs Joinery and Shopfitters as a BBEE initiative. This was in response to the groundswell to embrace and comply with the government's call to accelerate the incorporation of people of colour into the economy. Empowerment seeks to provide more opportunities for two of Jacobs Joinery and Shopfitters' most valued and long-standing female employees. Jacobs Industries is 51% black women-owned, with 49% owned by Jacobs Joinery and Shopfitters, and this is a welcome addition to the Jacobs group. Jacobs Industries operates nationally in South Africa in the industry of interior design, shopfitting, project management, and installations. Because of the close connection to Jacobs Joinery and Shopfitters, it relies much on their manufacturing capacity and guidance.

Jacobs specialises in the manufacture and installation of purpose-made shopfitting and joinery for clients, ranging from designers and architects through to end-users. Their clients operate within all economic sectors including retail, corporate, finance, and leisure. As a subsidiary company to Jacobs Joinery and Shopfitters, Jacobs Industries rely on their thirty years' experience in shopfitting, as well as their solid infrastructure and ability to understand and cater to their clients' varied needs. Being a South African based supplier of joinery and shopfitting products, Jacobs Industries sources most of their shopfitting from Jacobs Joinery and Shopfitters at this time, but have free rein to source wherever they can best procure value. Jacobs's personal customer service, technical expertise, and the experience of Jacobs's staff are current and abreast of global standards. Their clients are ranked among the largest in their sectors - and Jacobs has faced and overcome a range of logistical challenges through the unwavering provision of excellent service. Over the years, Jacobs have expanded their service offering to include construction and can provide full turnkey interior installations.

# CHÂTEAU GÂTEAUX



## SERVICE OFFERING

Jacobs has a substantial capacity to produce quality products fast. The very nature of their work invariably demands deadlines and tight time frames. Production facilities and installation teams are all geared to this reality. From single units to full turnkey projects, their clients have come to appreciate that no job is too big or small for Jacobs. Their various departments work in tandem or completely independently depending on the job at hand. Jacobs is proud to provide the following disciplines from in-house departments within their portfolio: ceilings and partitions, painting, electrical, building, tiling, joinery, shop, and office fitting, as well as a state-of-the-art metal work division with in-house powder coating abilities. Shopfitting products are manufactured in their 4000 sqm Pietermaritzburg facility. Production equipment includes CnC machines, beam saws, and a full range of specialised shopfitting and joinery equipment. Smaller workshop facilities are located in Johannesburg, which serves as a base for installations. Jacobs Industries, where possible, procure directly from other suppliers. This includes finished goods and specialised services from BBEE compliant sources, which are used in Jacobs Industries projects.

Installations are carried out by balanced and well-equipped teams. Skills are maintained at a high level, as this is critical in delivering quality products timeously. Jacobs's fleet of vehicles is geared to move installation teams and products quickly. Logistics are managed using current scheduling and monitoring tools, including satellite tracking installed in their vehicles. Products are also packed and colour coded for efficient delivery and placement on-site.





# BBBEE, COMPLIANCE AND SOCIAL RESPONSIBILITY

Jacobs Industries endeavours to comply with all current legislation applicable to the industry and knows that a demographically representative economic market is of paramount importance to the durability and stability of business in South Africa. Jacobs values and supports the process of workplace transformation and consistently strives towards an improved rating through their efforts to encourage employment equity, skills development, preferential procurement, and socio-economic development.

Jacobs Industries is certified as a level 2 BBBEE Company.

Health and Safety requirements are a top priority for Jacobs and, to this end, they have a health and safety officer who assists with staff training and compliance on their sites.





## QUALITY CONTROL

The factory in Pietermaritzburg is run very efficiently, with various internal quality control measures in place. Jacobs's management at the factory are personally responsible to ensure that every item that is produced meets their high standards of workmanship. Jacobs endeavours to ensure that all their clients are happy with the quality produced and they have many repeat customers who are not only satisfied but thrilled with the end product.

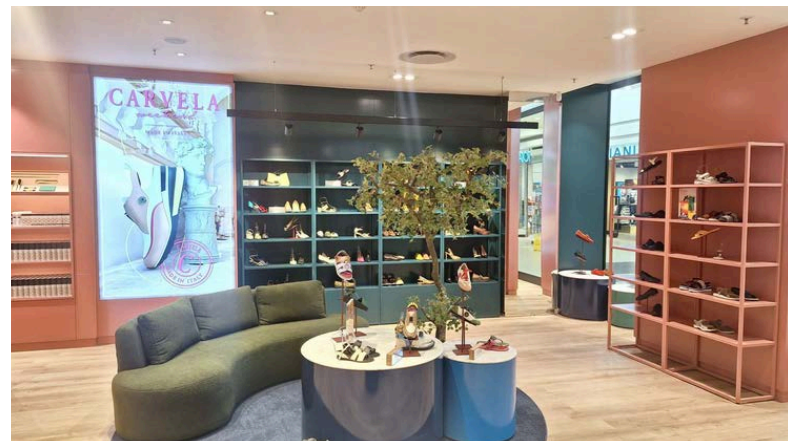




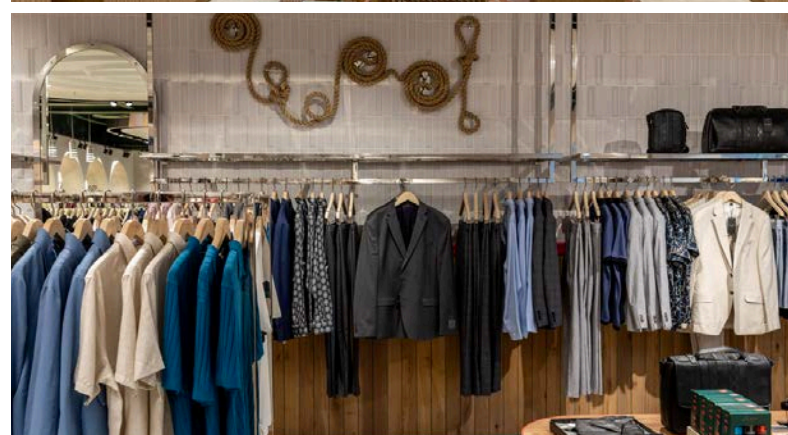
# SHOWCASE

You can rest assured that you are in good hands with Jacobs Industries. We are here to help you with all your shopfitting needs.

## WE ARE AT YOUR SERVICE!



# EAGLE



JOHANNESBURG | Tel: +27 11 791 3671  
332 West Avenue, Ferndale, Randburg, South Africa

PIETERMARITZBURG | Tel: +27 33 386 8244  
80 Pentrich Road, Pentrich, Pietermaritzburg, South Africa

**To view our portfolio, visit [www.jacobsshopfitters.com](http://www.jacobsshopfitters.com)  
Email us at [jjs@jjs.co.za](mailto:jjs@jjs.co.za)**